



**PHMC Board of Directors**  
**Paul A. Dandridge**  
 Chairman of the Board

**Richard J. Cohen**  
 President and  
 Chief Executive Officer

**John G. Loeb**  
 Senior Vice President

**Marino Puliti**  
 Chief Financial Officer  
 Financial and Administration

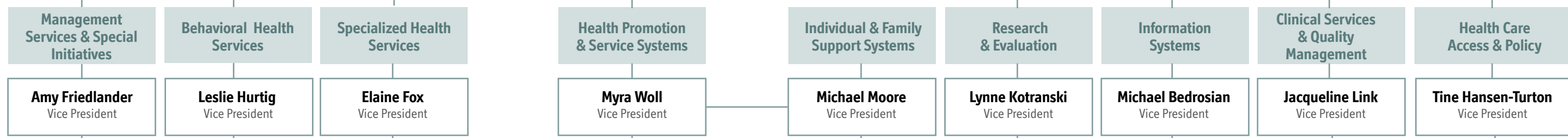
**Celeste Collins**  
 Vice President for  
 Human Resources

**Dina Baker**  
 Vice President of  
 Communications

**Bill Weber**  
 Vice President  
 for Finance

Training

- PHMC Affiliates**
- » Best Nest
  - » The Bridge
  - » Health Promotion Council
  - » Interim House
  - » Interim House West Facilities, Inc.
  - » Joseph J. Peters Institute
  - » Linda Creed
  - » National Nursing Centers Consortium
  - » Philadelphia Health Care Trust
  - » Public Health Management Services Corporation
  - » Resources for Children's Health



- Major Programs/Initiatives:
- **Communications**
    - Strategic Marketing & Communications Planning
    - Web Development
    - Graphic Design
    - PR/Media Relations
    - Internal Communications
    - Special Events
    - Video Production
  - **Public Affairs**
    - News Media Outreach
    - Legislative Outreach
    - Public Health Outreach
    - Special Events
  - **Communications & Marketing Consulting Service**
  - **Development**
    - United Way Campaign
    - Individual Donor Outreach

- Major Programs/Initiatives:
- **Targeted Solutions**
  - **Intermediary**
    - DHS Emergency Fund
    - DHS Parenting Collaborative
    - Out of School Time
  - **Linda Creed (Affiliate)**
  - **Best Nest (Affiliate)**
  - **Plain Talk National Replication Center**
  - **Pennsylvania Nutrition Education Network**
  - **Southeast Regional Key**

- Major Programs/Initiatives:
- **Behavioral Health Services**
    - The Bridge (Affiliate)
    - Bridge's Step-Down
    - CHANCES
    - Family Therapy Treatment Program
    - Interim House (Affiliate)
    - Interim House West
    - Joseph J. Peters Institute (Affiliate)
    - WestHaven

- Deborah McMillan**  
 Assistant Vice President for Social Service Programs
- Major Programs/Initiatives:
- **Healthcare for the Homeless**
    - Mary Howard Health Center
    - Rising Sun Health Center
    - PHMC Health Connection
    - PHMC Care Center
  - **HELP Philadelphia**
  - **Homeless Teen Education Project**
  - **Resources for Children's Health (Affiliate)**

- Major Programs/Initiatives:
- **HIV/HCV/STD Services**
    - HIV Care Outreach and Retention Project
    - PALMS Project
    - Philadelphia HIV/HCV Street Outreach Project
    - New Pathways Project
    - New Pathways for Women Project
    - Philadelphia STD Control Program
    - Philadelphia Hepatitis Outreach Project
  - **Injury Prevention Services**
    - Street Smarts Program
  - **Environmental Health Services**
    - Asbestos Control Program

- Major Programs/Initiatives:
- **Forensic Intensive Recovery**
    - Forensic Services (FIR)
    - Intermediate Punishment Program (IPP)
    - Domestic Violence Court
    - Youth Violence Reduction Partnership
    - Philadelphia Treatment Court
    - Philadelphia Community Court
    - Family Court
    - Juvenile Treatment Court
    - DUI Court

- Major Programs/Initiatives:
- **Child Health Services/ Early Intervention**
    - ChildLink
  - **PersonLink**
  - **Child and Adolescent Needs and Strengths (CANS) Assessment Unit**

- Major Programs/Initiatives:
- **Community Health Data Base (CHDB)**
  - **Health Services Research**
  - **Needs Assessments and Outcome Measurement**
  - **Health Promotion/Disease Prevention**
  - **Chronic Diseases**
  - **Program Evaluations**
  - **Tobacco and Substance Use**
  - **HIV/AIDS**
  - **Maternal and Child Health**
  - **Family and Youth Violence**
  - **Adolescent Health/ Sexuality**

- Major Programs/Initiatives:
- **On-site Computer and Telephone Technical Support**
  - **Database Design, Development, Support**
  - **Program Technical Assistance**
    - ChildWare
    - Client Registry Service
    - Administrative Automation Services
    - PCAPS
  - **Third Party Systems Support**
    - MISYS/AllScripts
    - HCSIS (PELICAN)
    - CAREWare
    - Fundware
    - ADP

- Major Programs/Initiatives:
- **HIV Primary Care Services**
  - **HIV Home and Community-based Health Care**
  - **D.O.T. Program**
  - **Quality Management for:**
    - Health Care for the Homeless
    - Behavioral Health Services
    - ChildLink

- Major Programs/Initiatives:
- **National Nursing Centers Consortium (Affiliate)**
  - **Health Promotion Council (Affiliate)**
  - **Policy Development**